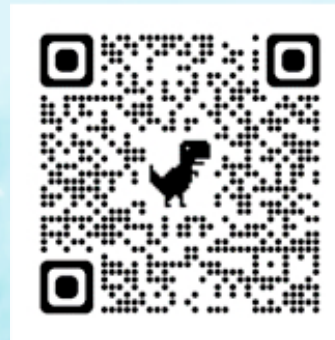


**L J UNIVERSITY CELEBRATED
INTERNATIONAL GIS DAY- 2021
“GIS EDUCATION BEYOND THE BOUNDARIES”
IN COLLABORATION WITH SAC, ISRO**



LJ SCHOOL OF PLANNING
Certificate Course in Geo-Informatics

Six-Months intensive
Professional Training
on RS & GIS



CONTACT DETAILS

9925050986, 7929097896, 9228010050

LOCATION

New LJ Campus, Sindhu Bhawan Road, Pakwan Cross Road,
SG Highway, Ahmedabad - 380054

MAIL US

janki.adhvaryu_ljiet@ljinstitutes.edu.in
ljia@ljinstitutes.org

www.ljku.edu.in



LJ UNIVERSITY:

LJ University is a key player of excellence in education promotes and nurture creativity, innovations and eminence in the various fields. Geoinformatics is one of the emerging S&T disciplines which is designed developed nurtured and supported by Govt of India. **As a collaborative initiative LJ University has signed the prestigious MoU with SAC, ISRO for strengthening the academic & research interactions.**

GEO-INFORMATICS:

This multi disciplinary academic certification program in Geoinformatics aims to introduce GIS and Remote sensing to young graduates and professionals from various streams who desire to up skill and build their careers by applying Geospatial technology into their respective domains. Geo-informatics certificate course impart conceptual education through theory and practical teaching using real time case study and deepen the knowledge in technology advances.

PROGRAM OUTCOME:

By the end of this course, it is expected that trainee will be in position to apply and perform the spatial data processing including creation and editing of spatial data, spatial query and display, spatial analysis, cartographic mapping and visualization. The students would able to use various types of satellite imagery, and analysis interpret satellite images, perform classification and create thematic maps. Student will also develop basic learning of programming languages for geo-spatial decision making.

FOR WHOM:

The program is useful to the students, researchers, academia and professional from science and technology, planning, architecture, design, and various disciplines

SUBJECTS COVERED IN COURSE:

- » **GEOGRAPHICAL INFORMATION SYSTEM:** Map Projections, Cartography, overview of GIS, Map making and Interpretation, Representation of Statistical concepts, Spatial Data Structure, Data Manipulation, SQL, Spatial Data Analysis, Spatial Networking, Data quality inputs and outputs. Hands-on Training using ARCGIS and QGIS.
- » **REMOTE SENSING:** Data downloading, Basic principles, Sensors understanding, Resolutions, Image Analysis & Interpretation, Digital Image Processing, Image Enhancement, Classification Techniques, Hyperspectral RS, Thermal RS, Microwave RS. Hands-on Training using ARCGIS and QGIS.
- » **PROGRAMMING LANGUAGES:** Introduction to various programming languages, Object Oriented Programming in Python, working with Python and PYQGIS, VERSION CONTROL SYSTEM, GIT GITHUB, Geoprocessing using C, C++

STRENGTH OF THE PROGRAM:

- » Teachers and mentors are Eminent Scientists, Highly Qualified and well Experienced.
- » Internationally accepted syllabus Support in Placement.

ELIGIBILITY CRITERIA:

- » Bachelor's degree in Engineering, Technology, Architecture, Planning, Design, Commerce, Earth sciences, Life sciences, and pure sciences.
- » Currently pursuing Degree/ Diploma courses.



Source google SDG